

Dong Hee Lee's Solo Exhibition

EGG

March 18 - April 17, 2022

About the exhibition

Inspired by generative power and mysteries of our physical and spiritual realities, Dong Hee creates pieces of art using an unusual method: hot glue from a glue gun. Using hot glue, Dong Hee constructs shapes and forms to resemble cells within the human body. Specifically, she focused on replicating the structure of the human egg that represents the origin of birth.

Celebrating Women's History Month, this exhibition illuminates female identity from a cytological view and its relationship with nature. A Series of installations, sculptures, and printed works that explore the origin of human beings and their relationship with the environment will be presented at the gallery.

About the artist

Dong Hee Lee is an artist based in New York. She received her BFA in 2009 and MFA in 2012, both from Long Island University C.W. Post, NY. Her work has shown in many domestic and international art fairs and exhibits such as NYU Langone Medical Center, Hutchins Gallery Brookville, Yegam Art Space, Hillwood Art Museum, and Korean Culture Center in Washington D.C., also participated Portal Art Fair, Miami Red Dot Art Fair, Governors Island Art Fair, and Fountain Art Fair, Hong Kong Affordable Art Fair, SEOUL OPEN ART FAIR in Korea. And her work has been featured in the Times Ledger, the Washington Post, HYPERALLERGIC, Art Report, NY Korean Times, Fine Art Magazine, and the Epoch Times to name a few.

For more information, please visit www.artistdongheelee.com

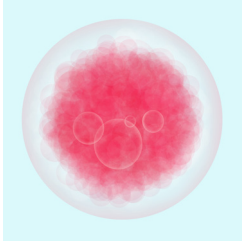
Art Workshop 'Glue Gun Painting on Canvas' | Sunday, April 17, 3:00 pm - 4:30 pm

Free and open to the public. Age 12 or older recommended. Registration required.

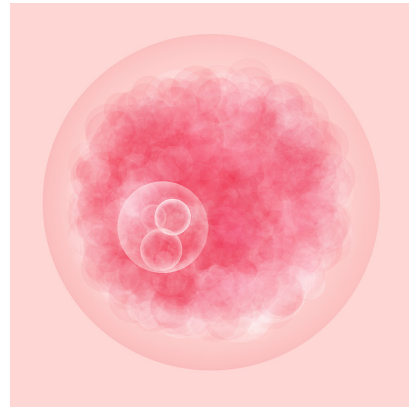
Please visit <https://garageartcenter.as.me> to reserve your seat.

If you have any question, please email at contact@garageartcenter.org

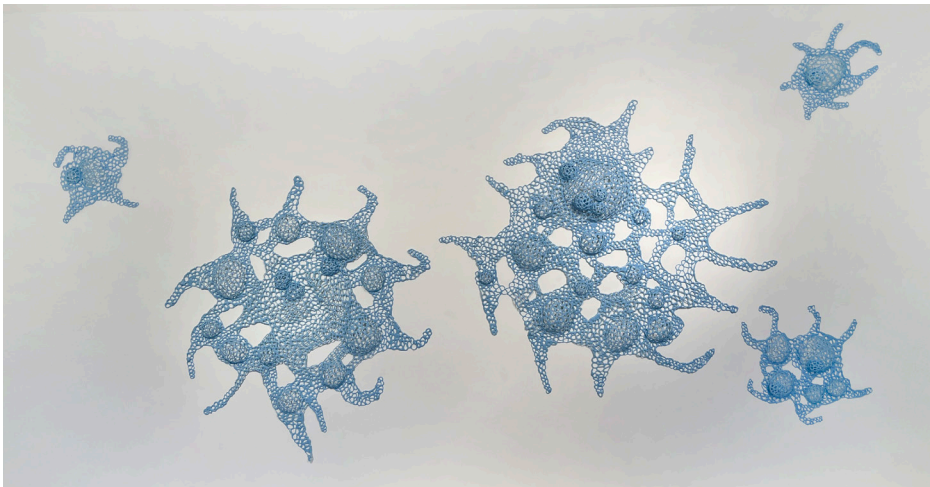
Image List



EGG-PB
2016 | 12" H x 12" W
C-print on mounted to plexiglass, 2/9



EGG-PP
2022 | 43" H x 43" W
C-print on mounted to plexiglass, 2/9



Social Organism
2022 | Black and Red hot glue



Fecundity-RB
2022 | Black and Red hot glue

