

Linda Rettich's Solo Exhibition

Happily Ever After?

September 4 - September 27, 2020

About the exhibition

We grew up with fairytales that helped us understand human behavior. The fairytales have a moral message. Read at different ages, they offer new insights into human frailties and consequences.

Different from what we've read in most fairytales, in reality, we realize not everyone lives 'Happily ever after'. The sculptures inspired by famous fairytales presented in this show reveal alternate endings regenerated by artist Linda Rettich's meticulous beaded touches. Understanding different narratives will help the viewers expand the perspective on life and to become open-minded.

Artist's editions of The Princess and the Pea, Rumpelstiltskin, Rapunzel, and Little Red Ridinghood will be presented along with beautifully designed wearable beaded art pieces.

Although the tales in this exhibition are stories from the western view, other cultures may have variations on these tales, as they deal with universal human behaviors such as greed, jealousy, boastfulness, and even violence. All stories are unique, and every story matters as we reflect and learn from it.

"Building an object with tiny beads is an intense activity. The process demands close scrutiny, constant decision-making, flexibility, innovation, and time. It involves a critical dialog between what I see and where I want to go--allowing the piece I'm working on to discover itself as it develops.

Every project I work on is a creative adventure. I'm never at a loss for ideas, but only the ones that won't let go become a creative reality. I love working with the smallest of beads to create textile-like patterns, color progressing, textures and tiny details within larger shapes.

When I'm engrossed in a beading project, time and the world 'out there' go away. My need to organize and construct takes over. The quiet, repetitive action of beads-to-needle soothes and relaxes. With a profusion of beads within reach, a threaded needle in my hand, and a visualization that drives me forward, I'm living at my creative edge. It doesn't get better than that."

- Linda Rettich, 2020

Beaded Earrings Workshop | Sunday, September 27, 2 pm - 4 pm

Free and open to the public. (Age 10 & up.)

All materials provided. Seats are limited & Registration required.

Please register via email at contact@garageartcenter.org.

Check our website for more details.

Image List



Little Red Riding Hood

15" H x 20" W x 17" D
Size 15 seed beads, antique doll bed, antique porcelain dolls, antique paisley, miscellaneous textiles and rag rug



Storyteller Doll

26" H x 13" W x 7" D
Beads, sashimi embroidered skirt, knit sweater, antique glass dome, santos doll, bone chatelain items, wood embroidery hoop, watch, apple ear phones



The Princess and the Pea

25" H x 25" W x 20" D
Size 15 seed beads, antique porcelain half doll, antique metal doll's bed, selection of ethnic/antique textiles, antique rug, wooden ladder



Snow White

15" H x 20" W x 14" D
Size 15 seed beads, antique doll bed, antique porcelain dolls, antique paisley, miscellaneous textiles and rag rug



Rumpelstiltskin

20" H x 18" W x 18" D
Size 15 seed beads, antique glass dome, antique porcelain doll, new doll, antique Frisian spinning wheel, wooden cradle, crocheted blanket using embroidery floss, faux grass, burlap bags, wooden spools, 18" diameter revolving base

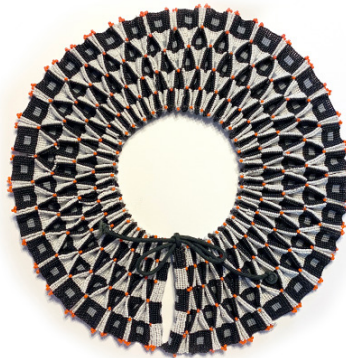


Rapunzel

17" H x 12.5" W x 7.5" D
Size 15 seed beads, antique glass dome, antique porcelain doll and half doll, antique, carved wood tower, pocket watch holder, faux grass, antique stamped metal leaves, rhinestones, straight pins



Multi-Color Reversible Collar
12" diameter
Size 11 seed beads, cord



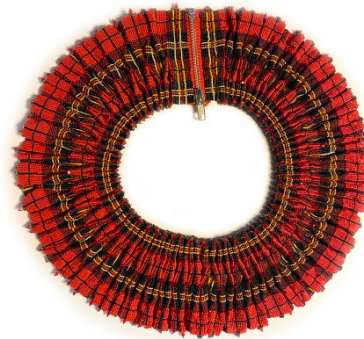
Black and White Reversible Collar
12.5" diameter
Size 11 seed beads, cord



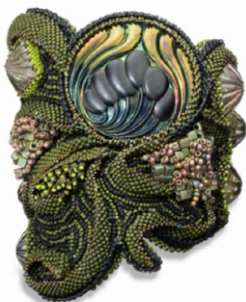
Turquoise, Black, Red and White Reversible Collar
12" diameter
Size 11 seed beads, cord



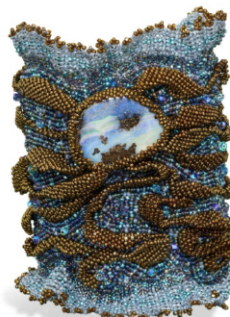
Kente Cloth Inspired Reversible Collar
12" diameter
Size 15 seed beads, cord, rolled paper beads



Red Clan Tartan Collar
14" diameter
Size 15 seed beads, zipper



Serpentine Cuff
7" H x 4" W
Size 15 seed beads both off-loom woven and embroidered, antique German glass cabochons, variety of decorative beads, leather backing



Opal Sea Cuff
7" H x 4" W
Size 15 seed beads both off-loom woven and embroidered, opal cabochon, leather backing



Fossil Stone Cuff
7" H x 4" W
Size 15 seed beads off-loom woven, bugle beads, buttons, fossil stone cabochon